

Projected Enrollments

2018 to 2023

January 17, 2019, Board Presentation

SUMMARY OF FINDINGS

- (1) Total enrollment in the Gilroy Unified School District (GUSD) declined by more than was forecast from October 2017 to October 2018. The main cause of this was unexpected delays in new home occupations, especially in the Alexander Station apartments, which did not start to be occupied until November. These delays do not alter the probable future enrollments from those locations, as there will be students in those dwellings henceforth. There also, however, were additional negative trend findings in the existing housing.
- (2) The updated GUSD enrollment forecast includes the combination of (A) significant student gains from new housing and (B) significant student losses from the existing housing. A major economic recession and/or other factors that cause fewer-than-forecast units to be built could result in a larger five-year reduction than we are projecting. Provided that such a reduction in students coming from future dwellings does not occur, then the most likely scenario is for the total GUSD enrollment to have only nominal changes from October 2018 to October 2019 and October 2020, with a modest decline thereafter, for net losses of 147 total students in three years and 267 in five years. Significantly lower enrollments, however, are possible.
- (3) The projected differences are not proportionally balanced by grade level or year. The grade-level changes forecast for next October are small losses at the elementary and high school levels that are offset in the total by middle school gains. The net changes from the current enrollment to those in two-to-five-years shift to being losses in only the elementary and middle school levels, but no level is forecast for differences by over 170 during that time. While specific numbers are not projected after 2023, the student distribution through the grades then, with large classes in 10th and 12th, indicates a larger decline from 2023 to 2026.
- (4) The differences are much greater in the projected “resident” (home school) changes by attendance area. Due mainly to where the future housing is concentrated, the forecast over the next three years has resident student gains, in the relevant grades (but excluding TK), by 89 for Eliot, 141 for Las Animas, 91 for Solorsano and 185 for Gilroy High. By contrast, the Christopher High region is forecast to have 184 fewer students in 2021 than today and the (A) Rucker, Luigi Aprea, Antonio Del Buono, Rod Kelley and Glen View elementary areas and (B) South Valley (with option area) and Brownell middle school areas could each have reductions by between 55 and 93 students. The Antonio Del Buono region, however, should continue to have the lowest total, with potentially only around 450 resident K-5 students each year.

Table 1 (PowerPoint version): Summary of Actual and Projected District Enrollments, 2013 to 2023

Enrollment Subject	Total Non-Ochoa and Non-GPS Enrollment by Grade Level			Non-Ochoa and Non-GPS TK-12 Total	TK-12 Ochoa Total	TK-12 Total with Ochoa (excl. GPS)
	TK-5	6-8	9-12			
Actual on October 1, 2013	5,125	2,567	3,675	11,367	119	11,486
Actual on October 4, 2017	4,859	2,534	3,807	11,200	89	11,289
Actual on October 4, 2018	4,694	2,533	3,755	10,982	100	11,082
Projected for October 1, 2019	4,665	2,616	3,726	11,007	92	11,099
Projected for October 1, 2020	4,654	2,500	3,837	10,991	92	11,083
Projected for October 1, 2021	4,608	2,471	3,764	10,843	92	10,935
Projected for October 1, 2022	4,571	2,406	3,797	10,774	92	10,866
Projected for October 1, 2023	4,574	2,364	3,785	10,723	92	10,815
One-Year Change to Oct. 2019	-29	83	-29	25		17
Two-Year Change to Oct. 2020	-40	-33	82	9		1
Three-Year Change to Oct. 2021	-86	-62	9	-139		-147
Four-Year Change to Oct. 2022	-123	-127	42	-208		-216
Five-Year Change to Oct. 2023	-120	-169	30	-259		-267

Note: Projected 2019 totals include 60 TK-5 students, 30 6-8 students and 40 9-12 students from the new Alexander Station apartments. These estimates may be too high, in net, in the first year or two of occupation. The 2019 totals could be lower, perhaps by as much as 50% of those amounts in each grade level. The District should check student numbers from these apartments in the next few months and adjust 2019 estimates accordingly.

Appendix A1 (PowerPoint Extract): Detail for Actual and Projected October Enrollments from 2013 to 2023

(with color highlighting of pink for classes that were or are projected to be 1000+ when in 9th; blue for classes that were or are projected to be between 950 and 999 when in 9th; yellow for classes that were, are, or are likely to be between 900 and 949 when in 9th; and orange for classes that probably will be below 900 when in 9th)

Projected GUSD Enrollment, including all students maintained in GUSD Database Records except for Ochoa Camp Students (also excludes GPS and NPS students)															
Oct. of	TK	K	1	2	3	4	5	6	7	8	9	10	11	12	TK-12
2013	95	830	838	878	806	760	918	850	884	833	967	902	858	948	11,367
2014	146	763	820	858	868	817	764	882	843	865	925	976	924	902	11,353
2015	123	739	760	824	851	890	823	783	905	844	971	910	968	961	11,352
2016	124	743	774	770	847	851	919	824	786	925	954	977	906	972	11,372
2017	141	708	778	769	787	841	835	937	800	797	1011	933	952	911	11,200
2018	130	698	725	764	757	773	847	807	917	809	921	970	913	951	10,982
2019	135	724	729	739	775	765	798	860	814	942	914	917	964	931	11,007
2020	135	723	749	738	747	777	785	807	860	833	1046	905	905	981	10,991
2021	131	706	743	751	741	744	792	792	804	875	929	1029	888	918	10,843
2022	134	721	724	745	752	738	757	799	789	818	970	914	1009	904	10,774
2023	136	729	739	726	746	748	750	764	796	804	911	955	897	1022	10,723
Real Potential Lower Numbers in 2019 (essentially -1.2% aside from Ochoa)															10,870
Real Potential Higher Numbers in 2019 (essentially +0.8% aside from Ochoa)															11,100
Real Potential Lower Numbers in 2023 (essentially -4.5% aside from Ochoa)															10,250
Real Potential Higher Numbers in 2023 (essentially +3.5% aside from Ochoa)															11,000

Projected Students from New Housing:

2023	15	80	80	79	79	77	76	77	73	73	73	71	68	68	989
------	----	----	----	----	----	----	----	----	----	----	----	----	----	----	-----

**Chart 1: Actual and Projected October TK-12 Enrollments
(excluding EI Portal, GPS and NPS), 1993 to 2023**

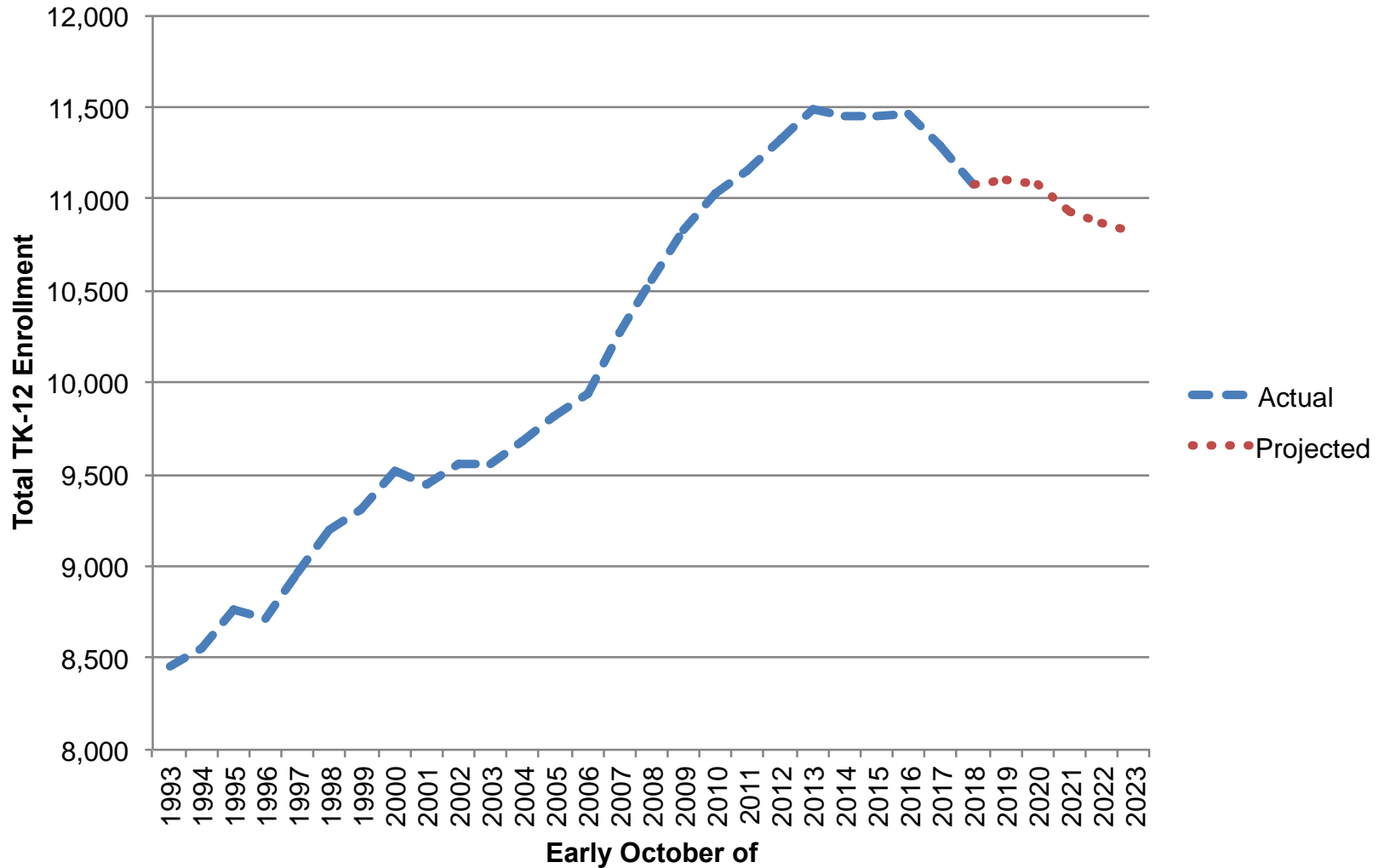


Table 2 (PowerPoint version)

Actual Attending Enrollments and Actual and Projected Resident Student Totals by School

(with color highlighting for resident shifts by at least 30; growth in yellow, decline in orange and brown for both)

School	Actual Resident and Enrollment part				Projected Resident Student Population part						
	Actual Resident Shift from Oct. 2017	Actual October 4, 2018 (excluding TK students)			Projected Resident October Stu. (excl. TK) in the Relevant Grades			Projected Resident Student Change to October			
		Resident Students	Attending Adjustment	Attending Enrollment	2019	2020	2021	2019	2020	2021	
Rucker	-15	598	-21	577	571	563	543	-27	-35	-55	
Luigi Aprea	-16	532	95	627	511	490	476	-21	-42	-56	
Antonio DB	-49	461	-58	403	461	454	442	0	-7	-19	
Rod Kelley	-15	684	72	756	659	629	613	-25	-55	-71	
El Roble	-10	537	47	584	521	531	528	-16	-6	-9	
Glen View	-39	630	-111	519	601	564	537	-29	-66	-93	
Eliot***	-17	443	-41	402	521	541	532	78	98	89	
Las Animas***	40	632	111	743	642	711	773	10	79	141	
South Vly.*****	-9	779	119	898	790	733	686	11	-46	-93	
Brownell	-16	741	41	782	750	695	681	9	-46	-60	
Solorsano	12	959	-85	874	1,015	1,015	1,050	56	56	91	
Christopher	-85	1,881	-287	1,594	1,776	1,769	1,697	-105	-112	-184	
Gilroy HS	55	1,693	-36	1,657	1,754	1,876	1,878	61	183	185	
Mt. Madonna	NA	NA	125	125	NA	NA	NA				
TJO GECA	NA	NA	305	305	NA	NA	NA				
Advanced Path	NA	NA	75	75	NA	NA	NA				
CHS Ind. Study	NA	NA	23	23	NA	NA	NA				
Oasis	NA	NA	8	8	NA	NA	NA				

Table 4 (PowerPoint version, page 1 of 2)
Comparison of Recent Enrollment Changes in Gilroy USD and Select Other Area Districts
(with the highest recent grade-range total for each district highlighted in gray)

Enrollment Subject	Fall of	Total Enrollments within TK-8 or 9-12 for Each District						
		Gilroy TK-8	Gilroy 9-12	Morgan Hill TK-8	Morgan Hill 9-12	Oak Grove	Evergreen	Berryessa
Actual	2010	7,660	3,367	6,058	2,949	11,531	13,417	8,222
Actual	2011	7,643	3,508	5,922	2,846	11,501	13,347	8,059
Actual	2012	7,753	3,569	5,915	2,786	11,348	13,373	7,995
Actual	2013	7,784	3,702	5,866	2,676	11,166	13,159	7,933
Actual	2014	7,707	3,748	5,750	2,649	10,887	12,861	7,742
Actual	2015	7,616	3,828	5,794	2,721	10,610	12,287	7,453
Actual	2016	7,629	3,831	5,686	2,794	10,382	11,830	7,296
Actual	2017	7,458	3,831	5,707	2,778	10,309	11,384	7,101
Actual	2018	7,295	3,787	5,580	2,714	9,889	10,842	6,981

Net Average Actual Annual Difference:

2010 to 2013	41	112	-64	-91	-122	-86	-96
2013 to 2017	-82	32	-40	26	-214	-444	-208
2017 to 2018	-163	-44	-127	-64	-420	-542	-120

Net Average Actual Annual Pct. Change:

2010 to 2013	1%	3%	-1%	-3%	-1%	-1%	-1%
2013 to 2017	-1%	1%	-1%	1%	-2%	-3%	-3%
2017 to 2018	-2%	-1%	-2%	-2%	-4%	-5%	-2%

Table 4 (PowerPoint version, page 2 of 2)
Comparison of Recent Enrollment Changes in Gilroy USD and Select Other Area Districts
(with the highest recent grade-range total for each district highlighted in gray)

Enrollment Subject	Fall of	Total Enrollments within TK-8 or 9-12 for Each District						
		Milpitas TK-8	Milpitas 9-12	Santa Clara TK-8	Santa Clara 9-12	Cupertino	Sunnyvale	Fremont UHSD
Actual	2010	6,694	3,188	10,978	4,241	18,372	6,530	10,352
Actual	2011	6,773	3,174	10,982	4,280	18,645	6,649	10,496
Actual	2012	6,821	3,190	11,056	4,128	19,028	6,761	10,647
Actual	2013	6,987	3,163	11,238	4,156	19,184	6,849	10,657
Actual	2014	7,039	3,243	11,059	4,210	19,068	6,801	10,734
Actual	2015	6,988	3,226	11,079	4,273	18,924	6,641	10,683
Actual	2016	6,991	3,283	11,058	4,304	18,585	6,531	10,847
Actual	2017	6,952	3,337	11,066	4,394	18,001	6,565	11,042
Actual	2018	6,874	3,276	10,966	4,372	17,353	6,587	10,944

Net Average Actual Annual Difference:

2010 to 2013	98	-8	87	-28	271	106	102
2013 to 2017	-9	44	-43	60	-296	-71	96
2017 to 2018	-78	-61	-100	-22	-648	22	-98

Net Average Actual Annual Pct. Change:

2010 to 2013	1%	0%	1%	-1%	1%	2%	1%
2013 to 2017	0%	1%	0%	1%	-2%	-1%	1%
2017 to 2018	-1%	-2%	-1%	-1%	-4%	0%	-1%

Chart 2: Actual TK-5 Student Totals in Santa Clara County Public Schools

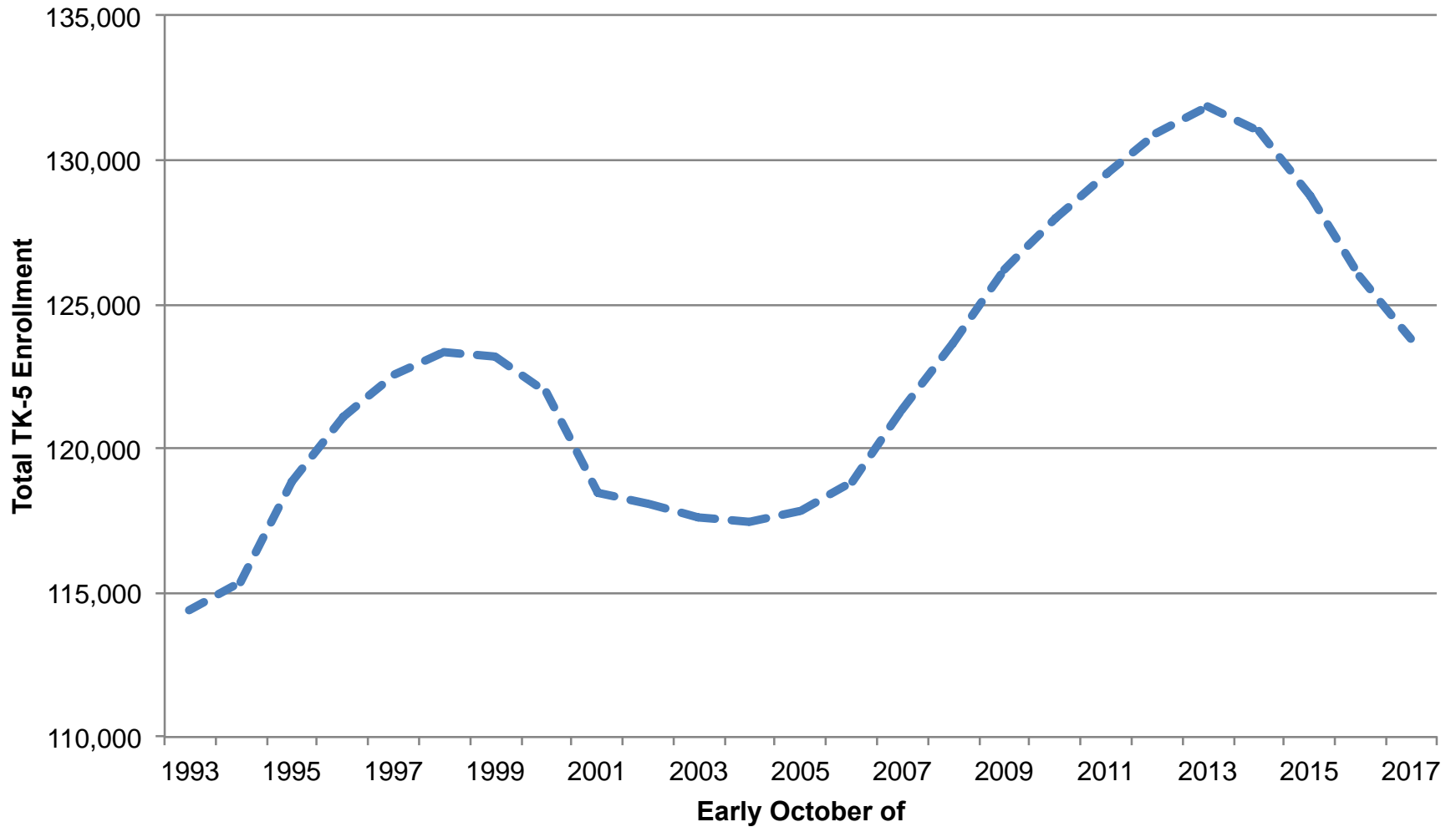


Table 5A (PowerPoint version, page 1 of 2)
Recent Student Population Trends in Existing Housing by General Value Level

Category/ Data Subject	Fall of	Resident GUSD-Enrolled Students (including SDC and excluding GPS)					TK-12 Percent Change
		K-2	3-5	6-8	9-11	TK-12	
SFD: Combined Most Affordable, Modest & Moderate Value in the City of Gilroy vicinity	2015	455	487	499	524	2,200	
	2016	451	479	481	554	2,157	
	2017	445	448	487	516	2,090	
	2018	418	435	470	491	1,996	
3-Year Change Within Grade Group		-37				-204	-9%
3-Year Change from Prior Grade Group			-20	-17	-8		
SFD: Combined Middle through Highest Value in the City of Gilroy vicinity	2015	710	858	848	1,002	3,805	
	2016	683	849	849	906	3,677	
	2017	675	787	822	920	3,563	
	2018	657	726	822	915	3,485	
3-Year Change Within Grade Group		-53				-320	-8%
3-Year Change from Prior Grade Group			16	-36	67		
SFD: Rural Mixed Value	2015	241	259	289	330	1,218	
	2016	235	275	266	349	1,241	
	2017	242	256	258	354	1,225	
	2018	232	277	261	324	1,225	
3-Year Change Within Grade Group		-9				7	1%
3-Year Change from Prior Grade Group			36	2	35		

Table 5A (PowerPoint version, page 2 of 2)
Recent Student Population Trends in Existing Housing by General Value Level

Category/ Data Subject	Fall of	Resident GUSD-Enrolled Students (including SDC and excluding GPS)					TK-12 Percent Change
		K-2	3-5	6-8	9-11	TK-12	
All Mainly ATT Housing Areas (over 90% of these students are from Most Affordable to Moderate Value areas) (excludes Ochoa)	2015	647	675	607	635	2,792	
	2016	610	678	641	625	2,809	
	2017	543	613	617	646	2,656	
	2018	531	551	597	587	2,506	
3-Year Change Within Grade Group		-116				-286	-10%
3-Year Change from Prior Grade Group			-96	-78	-20		
Areas with Full Mix SFD and ATT (mainly near downtown Gilroy) (over 67% of these stu. are in Most Affordable to Moderate Value areas)	2015	100	119	130	118	522	
	2016	100	102	117	124	485	
	2017	89	107	119	127	482	
	2018	83	102	119	135	481	
3-Year Change Within Grade Group		-17				-41	-8%
3-Year Change from Prior Grade Group			2	0	5		
Mobile Home Parks	2015	31	32	45	33	154	
	2016	26	31	36	28	137	
	2017	21	26	30	36	121	
	2018	22	29	23	35	120	
3-Year Change Within Grade Group		-9				-34	-22%
3-Year Change from Prior Grade Group			-2	-9	-10		

**Table 5B (PowerPoint version): Comparison of Student Trends
between All Areas of Existing Housing and New Housing and from Outside GUSD**

Category/ Data Subject	Fall of	Resident GUSD-Enrolled Students (including SDC and excluding GPS)					TK-12 Percent Change
		K-2	3-5	6-8	9-11	TK-12	
Total for Areas with Virtually No New Housing since Sept. 2012 (includes 10 to 18 students each year from mainly non-residential areas) (excludes Ochoa)	2015	2,187	2,433	2,421	2,644	10,705	
	2016	2,110	2,415	2,394	2,589	10,520	
	2017	2,017	2,238	2,335	2,604	10,147	
	2018	1,946	2,122	2,293	2,490	9,824	
3-Year Change Within Grade Group		-241				-881	-8%
3-Year Change from Prior Grade Group			-65	-140	69		
Total for Areas with New Housing added since September 2012	2015	90	77	63	66	317	
	2016	126	139	86	96	485	
	2017	190	151	136	122	637	
	2018	211	191	165	151	772	
3-Year Change Within Grade Group		121				455	NA
3-Year Change from Prior Grade Group			101	88	88		
Total Enrollment (includes Ochoa Camp, incoming inter-district attendance and a few students at unlocatable addresses)	2015	2,347	2,589	2,556	2,865	11,444	
	2016	2,308	2,637	2,559	2,856	11,460	
	2017	2,277	2,483	2,555	2,913	11,289	
	2018	2,207	2,404	2,554	2,830	11,082	
3-Year Change Within Grade Group		-140				-362	-3%
3-Year Change from Prior Grade Group			57	-35	274		

Table 6 (PowerPoint version)
Comparison of Local Births to Corresponding Kindergarten Populations (excluding Ochoa Camp)

Birth Year and School Enrollment Date	Total Births in Zip Code 95020	Resident Non-Ochoa District- Enrolled Kindergarten Students	Ratio of Non-Ochoa Dist.-Enrolled Kindergarten Students to Births
"2004" Births and October 2009 Kindergartners	925	802	87%
"2005" Births and October 2010 Kindergartners	938	824	88%
"2006" Births and October 2011 Kindergartners	1,019	864	85%
"2007" Births and Oct. 2012 Kindergartners plus 100% of TK	999	854	85%
"2008" Births and Oct. 2013 Kindergartners plus 50% of TK	988	858	87%
"2009" Births and Oct. 2014 Kindergartners plus 33.3% of TK	981	800	82%
"2010" Births and October 2015 Kindergartners	913	724	79%
"2011" Births and October 2016 Kindergartners	879	723	82%
"2012" Births and October 2017 Kindergartners	839	694	83%
"2013" Births and October 2018 Kindergartners	829	692	83%
Average Relevant to Kindergarten in last Four School Years			82%

**note that all
birth totals
below are
much lower
than any
before 2011**

"2014" Births and Potential October 2019 Kindergartners
"2015" Births and Potential October 2020 Kindergartners
"2016" Births and Potential October 2021 Kindergartners

Potential GUSD-Enrolled Total Resident K (excl. TK) excluding the Ochoa Camp		
	at Current Ratio	at 4-Year Avg. Ratio
	709	696
	704	691
	691	678

Chart 3: Annual Births to Mothers Residing in Gilroy Zip Code, 2000 to 2016

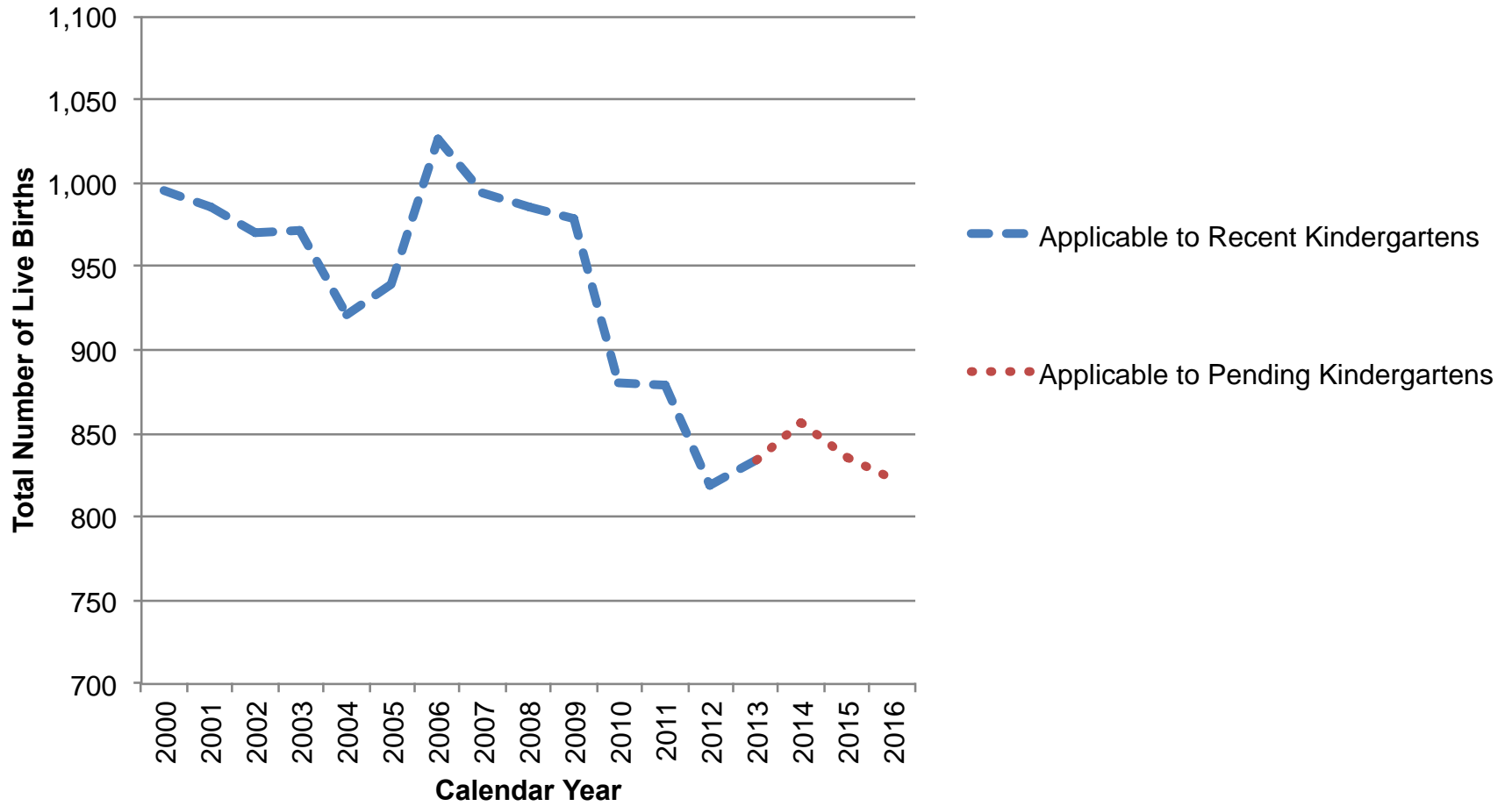
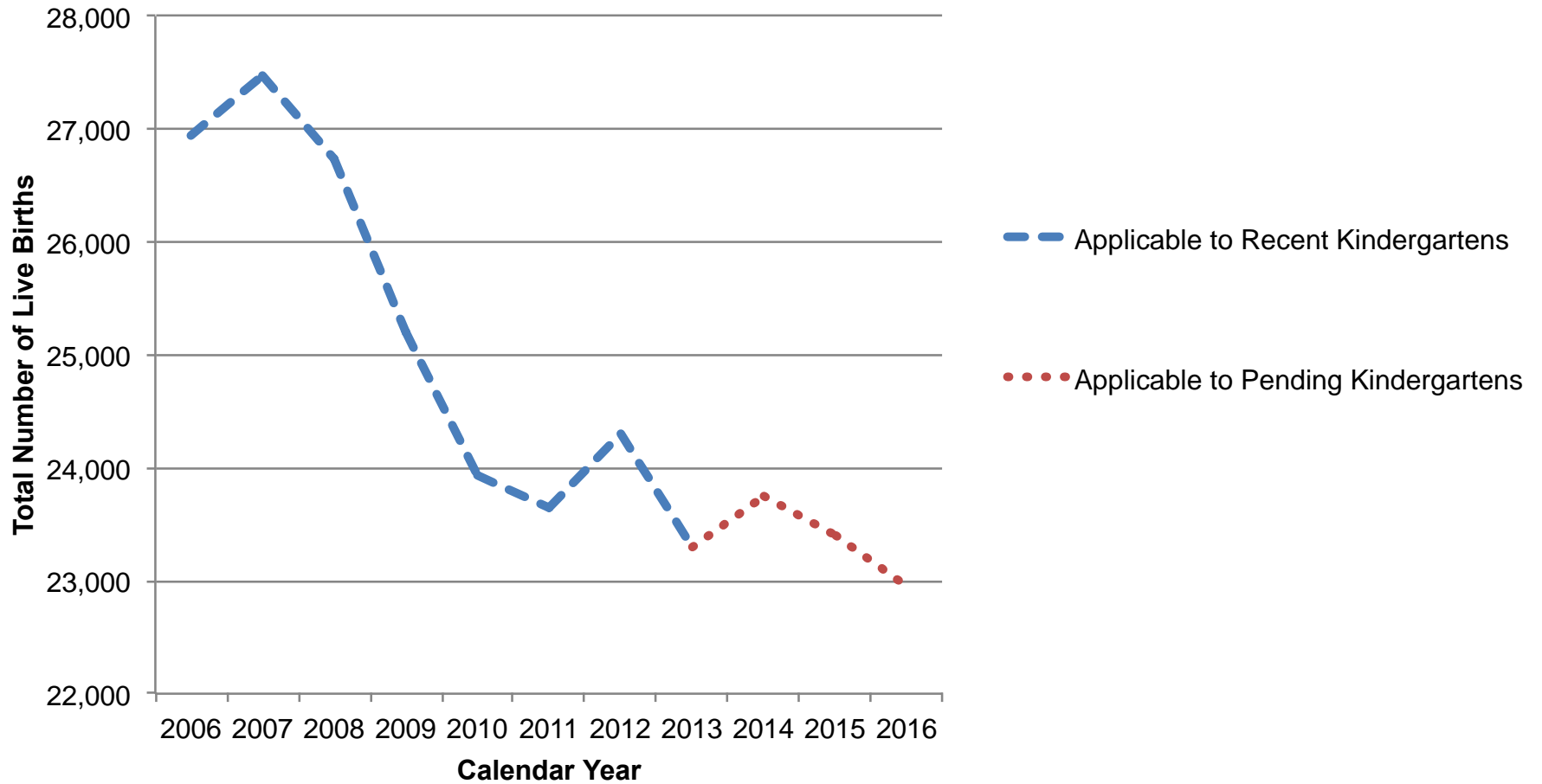


Chart 4: Annual Births to Mothers Residing in Santa Clara County, 2006 to 2016



**Table 7 (PowerPoint version): Average Student Generation Rates (SGRs)
from Sampled Recently Built Housing Units in the Gilroy USD Region**

Category of Recently Built Housing	Units in Sample	Current District-Enrolled Resident Student Population by Grade Range					Current TK-12 SGR
		TK-2	3-5	6-8	9-12	TK-12	
Developments of Mainly Market-Rate:							
Regular SFD	1,077	162	127	115	116	520	0.48
Regular ATT (one development)	170	4	5	5	10	24	0.14
ATT over Commercial Uses	72	2	3	2	1	8	0.11
Locations with at least 50% BMR	168	31	25	29	38	123	0.73

Table 8 (PowerPoint version): Projected New Housing Units (excluding residences designated for seniors)

Elementary Attendance Area	Housing Type (Developments of)	Projected Additional Units in 12 Months to Oct.					Total
		2019	2020	2021	2022	2023	
Antonio Del Buono	Mainly Market-Rate SFD	20	0	0	0	0	20
	Mainly Market-Rate ATT	27	0	30	45	0	102
	Mainly BMR	33	0	0	0	0	33
	All Types	80	0	30	45	0	155
Rod Kelley	Mainly Market-Rate SFD	66	0	0	0	0	66
	Mainly Market-Rate ATT	0	0	0		41	41
	All Types	66	0	0	0	41	107
Luigi Aprea	Mainly Market-Rate SFD	11	15	10	10	11	57
El Roble	Mainly Market-Rate ATT	0	101	101	0	0	202
Eliot	Mainly BMR	247	119	0	0	0	366
Las Animas	Mainly Market-Rate SFD	76	245	199	180	180	880
	Mainly Market-Rate ATT	0	0	0	35	40	75
	Mainly BMR	0	0	50	60	48	158
	All Types	76	245	249	275	268	1,113
District Total	Mainly Market-Rate SFD	173	260	209	190	191	1,023
	Mainly Market-Rate ATT	27	101	131	80	81	420
	Mainly BMR	280	119	50	60	48	557
	All Types	480	480	390	330	320	2,000

Additional information, including footnotes, for each of these PowerPoint tables can be found in the corresponding tables provided with the written report.